



Preparing international students for studying in British Boarding Schools

# ACADEMIC SUMMER COURSE



**Pre-GCSE Course**  
**Pre-A-Level / Pre-IB Course**



[www.ethertoneducation.com](http://www.ethertoneducation.com)



*Some of our British Student Hosts*

## YOUR NEW BRITISH FRIENDS

After you finish lessons every day, our Student Hosts will look after you. Their job is to be your friend, and welcome you! They will play sport with you every day and have dinner with you. They will help you with your homework. They will arrange many social activities, and come on all the trips with you.

They are with you after classes and all day when there are no lessons, so you can spend 50 hours a week chatting in English with native speakers if you want to do so!



*Student Hosts help you work and play*



*Student Hosts are funny and friendly!*

Welcome to our Etherton Academic Summer Courses at Wellington School. The main aim of these courses is to prepare international students for studying in British Boarding Schools. The courses are also suitable for students who just want a 'taste' of British education for the summer.

Our courses are academic ones. That means that students will study hard and make real progress. But they will also have lots of fun.

In addition to academic studies, we also focus on the personal development of students' 'soft skills' such as leadership, team work, communication, creativity and integration. A summer course at Etherton Education is a memorable, intense experience that students will never forget.



*Peter Etherton and a student*

*Peter Etherton has been involved in English Language teaching for over 40 years. He is the author of 'Oxford English' and over 100 other textbooks. He has taught at the Chinese University of Hong Kong, King Abdul Aziz University in Saudi Arabia, and in British Boarding Schools. He worked for the British Council as an ELT Specialist and was an IELTS Examiner.*

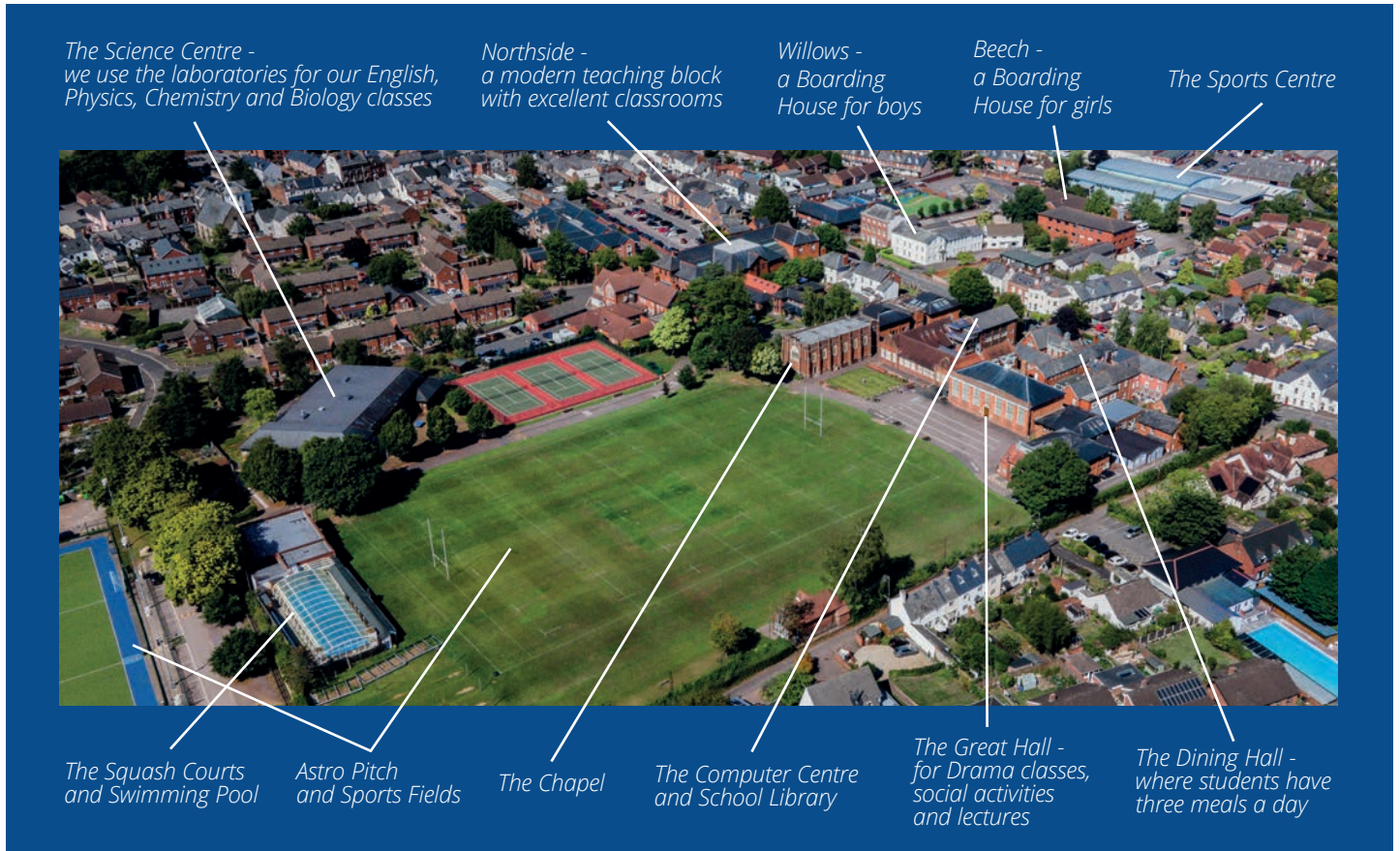
**HERE ARE THE AIMS OF OUR COURSES:**

1. To help students prepare in every way for their future education at a British Boarding School.
2. To improve students' ability to study and learn in the medium of English language.
3. To boost students' knowledge of studying their main academic subjects, focusing on technical language and British study skills.
4. To give students an immersion experience by surrounding them with British Student Hosts for 50 hours a week, allowing them to practise social English with friendly native speakers.
5. To give students the experience of living in a boarding school and experiencing the routines, discipline and opportunities of living with other students.
6. To explain to students how to be happy and successful at their future schools.

Course	Ages	Length	Location
Pre-GCSE Course	12-15	2 to 4 weeks	Wellington School
Pre-A-Level / Pre-IB Course	15-17		

**LOCATION**

Our summer courses are based at Wellington School, a famous independent school in the town of Wellington, Somerset. The town is surrounded by beautiful green countryside.



*Wellington School*

**WHERE IS WELLINGTON?**

The town of Wellington is in the country of Somerset, in the west of England. It's about two and a half hours from London Heathrow by car. If you travel by train, use Paddington Station in London and come to Taunton (about two hours) and then take a taxi (about 20 minutes).

The west of England has a mild climate. The summers are usually warm, around 20-26 degrees. There are some rainy days, but we usually have good weather for the Summer Course.

Note: There are at least three other towns in the UK called Wellington. Make sure you come to the right one!



*You can travel from London to Wellington School in about two hours by train.*



## ACCOMMODATION

All students will live in safe Boarding houses on the Wellington School campus. The Houses are clean and well-heated. Over half of the rooms are for two people. There are also some large rooms for three or four students sharing. The Houses have bathrooms, showers, comfortable lounges and Wi-Fi. Our resident staff sleep in the Houses and look after the students.

## SHARING ROOMS

A Boarding School is a school where you live and sleep. Sharing a room with a new person, and learning to make new friends, is part of the Boarding experience.



*Boys' House*



*Girls' House*



*Table Football in a Boys' House*



*A Bedroom in a Girls' House*

## SPORTS

Wellington School has wonderful facilities for sport, including a Sports Centre, a heated swimming pool, eight tennis courts, an Astro pitch and lots of grass playing fields. We will introduce students to many traditional British sports.



*The Sports Halls*



*The Swimming Pool*

## THE ACADEMIC PROGRAMME

The Pre-GCSE Course is suitable for international students who come to the UK to:

- study in Year 9 (Form 3)
- study in Year 10 (Form 4)

Students will spend 7.5 hours a week studying English, and will also have lessons in Maths, Physics, Biology, Chemistry, History, Geography, Business, Drama and Art. There is also a special lesson for Boarding Preparation. Please see the sample timetable on the next page. Our maximum class size is 16, but the average class size in recent years is usually 10 to 12.

## ENGLISH LANGUAGE CLASSES

We teach English in many different ways. In classes students will study a general course, which will include academic English.

- Students will also learn English for daily life, for talking about health, asking for help, etc.
- Students will learn research skills, produce a written project and give oral presentations.
- All students must read at least one graded reader a week and discuss it.
- All students also have 3 hours a week of Drama lessons and take part in a Drama Show. Drama is great for helping students to develop confidence in speaking English.
- British Student Hosts are on duty at least 50 hours a week so students can practise English conversations every day.



*Chemistry class*



*Learning English through games*



*Studying Together*



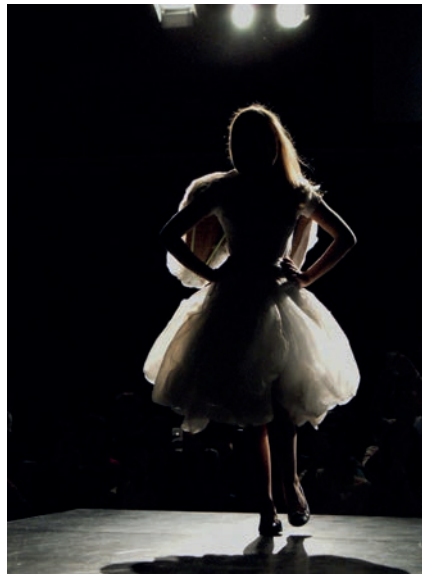
*Masks made in Art lessons*

## ENGLISH FOR YOUR GCSE SUBJECTS

Students will also learn more English by studying the core GCSE subjects, so they will study Maths, Physics, Chemistry, Biology, Business, Art, History and Geography. These are taught by subject specialist teachers. They will focus on the technical terms needed to learn each subject.

Students will spend 30 hours in class and will have at least five hours of homework a week. They will work hard but also have a lot of fun, and will have a sports lesson every day.

There are social activities in the evenings, trips on Thursdays and clubs on Sundays. Students will find it easy to make new friends.



At the fashion show



The Drama Show



Fun with Physics

## Sample Timetable for the Pre-GCSE Course

Time	MONDAY	TUESDAY	WEDNESDAY	THURSDAY	FRIDAY	SATURDAY	SUNDAY	
8.00	Breakfast							
9.00-10.30	English	Business	Geography	Full-day trip to Longleat. Visit the Safari Park, tour the 400-year-old house, play on the tourist attractions.	Art	History	Choose one of many Sunday Clubs.	
10.30-11.00	Break				Break			
11.00-12.30	Physics	Chemistry	Maths		English	Maths		
12.30-1.30	Lunch				Lunch			
1.30-3.00	Chemistry	Physics	English		Boarding Preparation	Drama	Local trip for shopping or sport or cinema; or free time at school	
3.00-3.15	Break				Break			
3.15-4.45	Biology	English	Drama		Biology	English		
5.00-6.00	Sport for all				Sport for all			
6.00-7.00	Dinner							
7.00-8.00	Supervised Homework in classrooms and Academic Conversation Practice with British Student Hosts						Optional social activities: video, board games, sport	
8.00-9.00	Social Activity: Team-Building Games	Movie Night	Free time for homework, sport or games	Free time for homework, sport or games	Free time for homework, sport or games	Social Activity: Fashion Show		
9.30	Return to Boarding House							

**THE ACADEMIC PROGRAMME**

This course is suitable for international students who will be starting A-Levels or the International Baccalaureate Diploma Programme in September. It will give students a great start to their studies at their next school. Our maximum class size is 16, but in recent years the average class size is about 10 to 12 students.

English and Drama are compulsory, and then students choose between 3 and 5 other subjects, depending on the timetable.

**ENGLISH LANGUAGE CLASSES**

Students will spend at least 7.5 hours a week in English lessons. We teach English in many different ways:

- In classes students will focus on academic English, which is essential for studying and for higher education at university.
- Students will also learn English for daily life, for talking about health, dealing with money and making travel arrangements, and so on.
- Students will learn research skills, produce an extended essay and give oral presentations. Students will work on improving their pronunciation.
- All students must read at least one graded reader a week and discuss it.
- All students also have 3 hours a week of Drama lessons and take part in a Drama Show. Drama is great for helping students to develop confidence in speaking English.
- British Student Hosts are on duty at least 50 hours a week so students can practice chatting with them every day.



*A one-to-one tutorial*



*A Boarding Preparation class*

**Sample timetable for Pre-A-Level / Pre-IB Course**

Time	MONDAY	TUESDAY	WEDNESDAY	THURSDAY	FRIDAY	SATURDAY	SUNDAY
8.00	Breakfast						
9.00-10.30	Economics with Business Studies	English	Biology	Full-day trip to Bristol to visit the Science Museum and SS Great Britain	Drama	Chemistry OR Geography	Choose one of many Sunday Clubs
10.30-11.00	Break				Physics OR History	Maths	
11.00-12.30	English	Art OR Theory of Knowledge	Chemistry OR Geography		English	Art OR Further Maths	Local trip for shopping or sport or cinema; or free time at school
12.30-1.30	Lunch				Psychology	English	
1.30-3.00	Drama	Maths	English		Sport for all		
3.00-3.15	Break						
3.15-4.45	Biology	Physics OR History	Economics with Business Studies				
5.00-6.00	Sport for all						
6.00-7.00	Dinner						
7.00-8.00	Supervised Homework in classrooms and Academic Conversation Practice with British Student Hosts						Optional social activities: video, board games, sport
8.00-9.00	Social Activity: Speed-Chatting	Sport, games or homework time	Movie Night	Sport, games or homework time	Boarding Preparation	Social Activity: Fashion Show	
9.30	Return to Boarding House						





## YOUR MAIN SUBJECTS

English and Drama are compulsory but you can choose the other subjects. Our teachers will help you to choose the most suitable subjects for your future education. You must take at least 3 other subjects. You may take 4 or 5 subjects if you wish and if the timetable allows it.

For these subjects, students will have 3 hours of classes a week:

Maths	Economics with Business
Physics	History
Chemistry	Geography
Biology	Art and Design

For these subjects, there is a 90-minute workshop once a week:

Psychology	Further Maths
Theory of Knowledge	Boarding Preparation

Students' timetables will vary according to their subject choices. For example, a student who is taking English, Drama, Maths, Physics, Chemistry, Economics and Further Maths would have 16 lessons (of 90 minutes each) per week, and four lessons of supervised Private Study.

All subjects are taught by qualified subject specialists. In all subjects, the teachers will focus on the English language which students will need for studying that subject.



A Chemistry lesson



Art teacher with his students



Giving a presentation



*Enjoying a three-legged race*



*Meeting a robot at the Science Museum*



*Formal Dinner speech*



*Newspaper dress*



*Student Hosts preparing for the Formal Dinner*

**SUNDAY CLUBS**

On Sunday mornings students can choose to join many different clubs such as these:

- |              |                |
|--------------|----------------|
| Church visit | Dog-walking    |
| Art for fun  | Craft Club     |
| Singing      | Jazz Dance     |
| Cooking      | Zumba exercise |
| Yoga         | Orienteering   |
| Photography  | Board Games    |

**SOCIAL EVENINGS**

We have two big social evenings every week. These may include a Fashion Show, a Business Game, an Environmental Game, and a Speed-Chatting event, meeting British guests. These evenings bring out your creativity and build up your mental strength and team spirit.

**FORMAL DINNER**

We believe good manners are important for everyone in life. At the end of the course, we have a Formal Dinner. Students dress up smartly, and we teach them how to behave in this kind of situation.

**DRAMA**

All students take part in their own Drama Show at the end of the course. This is always good fun and helps students develop confidence in speaking English.

**SPORT**

Every teaching day we have one lesson of sport. We introduce students to British sports such as netball, hockey, rugby, cricket and tennis so that students will be able to take part at their new schools. There are many opportunities for students to play familiar sports such as football, basketball and badminton in the evenings and on Sundays.



*The Speed-Chatting evening*



*Hertford Bridge, Oxford*

**CULTURAL TRIPS**

Every Thursday, there is one full-day trip for you to learn more about the culture of Britain. These will include:

**OXFORD**

We will visit the world's top university, set in a beautiful city. We will look at the famous colleges and have time to stroll around the city.



*At The Bristol Science Museum*

**BATH**

This beautiful city was founded by the Romans 2000 years ago. We will visit the Roman Baths, where they came to relax and have fun. You will also have time to explore the many interesting shops in the city.

**BRISTOL**

We will explore the interactive Science Museum called 'We The Curious', and visit the SS Great Britain, the world's first metal ship.

**LONGLEAT**

A beautiful stately home, where kings and queens have stayed. Students will drive through lions and tigers in the Safari Park, and then visit the 400-year-old house, have fun in the world's biggest maze, and feed the sea-lions from the boat on the lake



*The Roman Baths*



*Longleat House*

## **THE TWELVE ESSENTIAL WAYS IN WHICH INTERNATIONAL STUDENTS NEED TO PREPARE FOR A BRITISH BOARDING SCHOOL EDUCATION**

### **1 IMPROVE YOUR ACADEMIC, SOCIAL AND PRACTICAL ENGLISH**

The average 15-year-old international student will understand about 3,000 words of English. The average British student will know about 15,000 words. You need to catch up fast! Learning a language is a life-long task. In addition to technical vocabulary, you need to learn everyday social English. You cannot learn this from a book! You need to mix with young British people. You also need to learn practical English, for tasks like travelling, medical problems and banking.

### **2 TECHNICAL VOCABULARY FOR MAIN SUBJECTS**

You may be a top student in Maths or Geography in your first language, but can you understand these subjects in English? More important, can you ask questions and explain things in English? You also need to understand British teachers' classroom language – the formal and informal ways in which they talk about their subjects.

### **3 UNDERSTANDING BRITISH STUDY SKILLS AND CLASSROOM BEHAVIOUR**

In many parts of the world, the student is a passive learner. The teacher is the expert, and you must keep quiet, take notes and learn what they say. You must not waste the teacher's time by asking silly questions. In British schools, however, the situation is very different. The teachers will teach by asking you questions. They will not always tell you the answers – they make you think hard and find out the answers. They expect you to ask questions and to give your own opinions.

### **4 SELECTING THE RIGHT SUBJECTS TO STUDY, AND UNDERSTANDING THE EXAM SYSTEM**

It is important to choose the right subjects for GCSE, A-Level or the IB. Our teachers will help you think about these choices

### **5 UNDERSTANDING THE UNIVERSITY APPLICATION PROCESS AND DEVELOPING YOUR OWN STRATEGY**

If you plan to go to a British university after school, you need to understand the application process. You will need to write a personal statement. What will you say? You need to plan the next few years so that you will have a lot of interesting experiences to help you develop, and to give you topics to write about.

### **6 MAKING FRIENDS WITH THE BRITISH**

It can be difficult to make British friends when you go to a new school. But on an Etherton summer course, you will definitely find friends because we employ British Student Hosts and their job is to be friendly! For 50 hours a week you will have British friends around you.

## 7 YOUR PERSONAL INTEGRATION PLAN

Many international students just stay with students from their own country when they come to the UK. That is natural, but sensible students will also try to integrate with British and other nationalities. You should aim to be a citizen of the world! In future you may be involved in business, or research, or travel. It will help you if you can talk easily to people from other countries. So I suggest you make an integration plan. Decide that for part of your time at school you will join a club or society or sport where you must speak in English to other people.

## 8 UNDERSTANDING BRITISH MANNERS

Manners are very important in school life. In the UK, polite people say 'Please' and 'Thank you' all the time. You should thank the people who work in the school – the cleaners, the people who serve your food, the office staff and of course your teachers. Let older people go through doors in front of you. Make eye contact and smile at people. Don't keep your nose in your phone and your ears covered by headphones. And learn good, simple table manners.

## 9 UNDERSTANDING WHAT YOUR SCHOOL EXPECTS OF YOU

British schools are not exam factories. Schools (and universities) want to have busy, exciting lives full of hard work but also music, drama, sport and dozens of clubs and societies. Schools do not want you to stay in your room studying all the time. They want you to develop soft skills such as good communication, creativity, organisational skills, teamwork and leadership.

## 10 BOARDING SCHOOL RULES AND ROUTINES

If you have never lived away from home, you may find it hard at first when you start boarding. You have to follow a routine of callovers, registers, meals at certain times, uniforms, and so on. For most people it is no problem, but for some it can be hard. At the beginning, you should understand that you may have a difficult time. It will make you stronger, and things will get better and you will start to enjoy life.

## 11 UNDERSTANDING BRITISH SPORTS

If you love sports, you will have plenty of opportunities in British boarding schools. You may need to learn the rules of some new British sports such as hockey, netball, rugby, rounders and cricket – we will teach you about these during the summer course. If you join a sports team at your new school it will help you to make friends and help you learn English.

## 12 UNDERSTANDING AND SELECTING EXTRA-CURRICULAR ACTIVITIES

Before you go to your new school, do some research. Find out about the clubs, activities and sports at your future school and make a plan. Try join several new activities. These will help you develop your character, help you make friends and learn English, and they may be useful for your university or future job applications.

**At an Etherton Education summer course we will help you to prepare for your next school in all of these ways, so that you can say:**

**I understand everything in front of me.  
I feel confident.  
I am prepared and I will succeed!**





### When should students arrive and depart?

Our first Arrival Day is SUNDAY 03 August 2025. After that, Departure Days are on certain SUNDAYS for the rest of the summer. You will find these dates on the Application Form. Please check the start and end dates of your course very carefully. Please phone +44 (0)1823 672388 or contact us at info@ethertoneducation.com if you have any queries or require more information.

### How do students get to the school?

We meet students arriving at London Heathrow and Gatwick airports on the first day of our published course dates between 06:00hrs and 17:00hrs and arrange free transport to the school. If you arrive at other times or different airports, we can arrange transport for you at additional cost. If you are coming by road, please contact our Travel Co-ordinator for directions. Please see our Travel Information sheet for more details.

### How many students are there in a class?

The maximum class size is 16, but the average class size is usually around 12-13 students. For some lectures and work-shops there will be larger groups.

### What is the staff-student ratio?

The overall ratio is around one member of staff to each three students. We have very high levels of individual care. There are always plenty of staff around to look after our students.

### When are students supervised?

Students will have limited unsupervised time on the school campus in specified areas. Students aged 12-14 will always be supervised on trips and in town. Students aged 15-17 may have limited unsupervised time on trips and in local shops. Please refer to the Consent Form for Students in the Application pack for more details.

### How old are students? What level of English is necessary?

COURSE	MINIMUM AGE (as at 03 August 2025)	MAXIMUM AGE (as at 31 August 2025)	MINIMUM RECOMMENDED ENGLISH LEVEL
Pre-A-Level/Pre-I.B.	15	17	B2/IELTS 5.0
Pre-GCSE	12	15	B2/IELTS 4.0

Please see the chart above for the age range for each course and a guide to the recommended minimum levels of English. We look at each student's application individually and may send an online test to help us assess their level of English. Please advise us if students have any special needs or learning difficulties so that additional support can be arranged if possible.

### Where do students live?

All of the students on our courses live in single-sex boarding accommodation on the campus of Wellington School. Most rooms contain two beds but there are some larger rooms containing 3-6 beds (normally used for younger students). The boarding houses have comfortable lounges with television, WiFi and games. House staff live in the boarding houses and look after students.

### What about laundry?

A basic laundry service for machine-washable clothes is provided once per week. Students should ensure they have enough changes of clothes and all items must be clearly labelled with the student's name. Bed linen is changed once per week.

### Where do students eat?

Students eat their meals in the school dining room. Students are provided with three meals per day: break-fast, lunch and dinner. Meals are of good quality with a choice of different healthy main dishes, and a salad bar. For day trips students are provided with a packed lunch. Our host school will try to accommodate most dietary requirements but there may be an extra charge. Please advise us of any special diets required on the Health, Learning & Wellbeing Questionnaire in the Application Pack. Please note that our host school will not accept students with certain food requirements such as an extreme vegan diet.

**What clothes should I bring?**

No uniform is needed for the summer course. Students will need casual clothes for everyday use and plenty of sports clothes. There will be formal events so boys should bring a suit if possible and a white shirt, tie and dark shoes. Girls should have one or two formal dresses or suits. Bed linen and duvets are provided but students MUST bring their own towels.

**What is the sports programme?**

We have timetabled sports lessons every teaching day to introduce British sports. After classes and on non-teaching days there are further opportunities to play more sports with our Student Hosts. The school has grass playing fields, an Astro pitch, tennis courts, a sports hall and a swimming pool.

**What is the leisure programme?**

Twice per week there are major social activities for all students. These activities may include such things as the Business game, the Fashion Show, James Bond Night, a Murder Mystery, the Auction Game, Speed-Chatting, the Drama Show, and a formal Dinner and Dance. All students must join in these activities, which will help students to practise their English and develop their confidence. On Sundays, students choose a club to join such as Cooking, Art, Crafts, Zumba, Boxercise, Team Building Games and many more. There are also informal social activities on other evenings in the boarding houses.

**What is included in the course fee?**

We try to make sure that almost everything is included in the course fee, other than visa costs, air tickets and pocket money. Here is a summary:

- Accommodation in a residential single-sex boarding house, meals and weekly laundry.
- All teaching, text books, basic stationery materials and sports coaching.
- Social activities, Sunday clubs, and all trips including transport and entrance fees.
- Arrival and departure transfers from London Heathrow and Gatwick airports on the first and last days of our published courses. There are time restrictions to this so please refer to our Travel Information sheet before you book your travel.
- A basic insurance policy – please see our website for more details.

**How can we pay?**

Please see our Terms & Conditions in the Application Pack or on our website which contain information about how and when to pay and also details of our cancellations and refunds policy.

**Do students get a certificate and report?**

Yes, all students completing the course will receive a certificate. Students attending the full 4-week course will receive a detailed report on their work in each subject. Students on shorter courses will receive a short-form report.

**What happens if students are sick?**

Many of our staff have First Aid qualifications. If students have minor problems, our staff will look after them. If we have any concerns, we will take them to a medical centre near the school, or to hospital. We strongly advise that all students have their own comprehensive private insurance including medical cover.

What happens at the end of each course?

Students are required to leave the school by 11:00hrs on the last day of their course. Travel arrangements are the responsibility of parents or guardians. We provide a free transfer service to London Heathrow and Gatwick airports on the last day of our published courses but please note that there are time restrictions for this service. Please see our Travel Information sheet for more details. Our course fee does not include transfer from the school to other destinations but we are able to arrange transport at an additional cost.

**A final note:**

*The information in this brochure has been prepared carefully and in good faith. However, our courses are flexible and we are continually trying to improve them. We reserve the right to make changes to our courses at any time. We reserve the right to change our trip destinations due to weather, traffic, security or other concerns. This information does not, therefore, constitute in whole or in part any kind of contract between Etherton Education Ltd. and students, parents, guardians or agents. Please read our Terms & Conditions in our Application Pack or on our website.*

## Preparing international students for studying in British Boarding Schools

### OUR COURSE FEATURES INCLUDE:

- School in very safe location
- Intensive English language lessons
- Study the main academic subjects
- Practical lab work in the sciences
- Qualified teachers
- Ratio of 3 students to 1 staff member
- Cultural trips every week
- Learn how to play British sports
- Amazing social activities
- Sunday Clubs
- Drama Show
- Formal Dinner
- Focus on good manners
- Develop soft skills such as team-work, creativity, communication
- Specific lessons on how to prepare for Boarding School life
- Friendly British Student Hosts with you 50 hours a week for conversation practice



*Do come and join us*



*Wellington School*

### HOW TO APPLY

Email us at [info@ethertoneducation.com](mailto:info@ethertoneducation.com) or visit our website [www.ethertoneducation.com](http://www.ethertoneducation.com) where you will find our Application Pack including prices and full Terms and Conditions.

Course	Ages	Length	Location
Pre-GCSE Course	12-15	2 to 4 weeks	Wellington School
Pre-A-Level / Pre-IB Course	15-17		



**Etherton Education Ltd.,**  
Marlands, Sampford Arundel,  
Wellington, Somerset, TA21 9QU, UK

T: +44 (0)1823 672388  
E: [info@ethertoneducation.com](mailto:info@ethertoneducation.com)  
W: [www.ethertoneducation.com](http://www.ethertoneducation.com)

